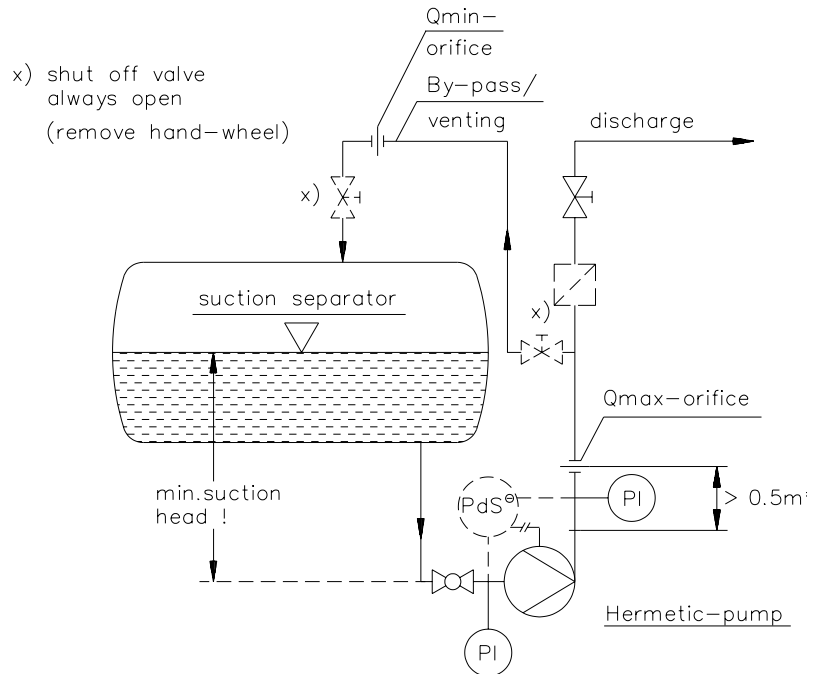


Installation of HERMETIC-Pumpen at liquefied gas applications

Edition - 12.10.2006

Automatic venting of the pumps

During standstill, the by-pass is used as a vent line. The pump should not be started unless it is primed with liquid refrigerant. During first priming or re-starting, wait until all pump parts have cooled down almost to the refrigerant temperature. When using non-return valves at the pump discharge, note that the by-pass line must be installed before the non-return valve, to permit automatic venting, **IMPORTANT:** No check valve should be used in the bypass line.



Parallel Operation of canned motor pumps

When **two or more pumps in parallel** serve a common discharge line (Fig. 7), a separate by-pass line must be provided for each pump unit. This is to remove the vapor which arises during standstill of the pump. With this arrangement, the minimum flow for each pump is assured and does not depend on the differential head. If one pump is used as a standby, non-return valves have to be mounted in the discharge line to avoid back-flow from operating to standby pump. The standby pump should be maintained full of liquid so as to be available for operation immediately. The by-pass line enables a switch over from one pump to the other or a connection of a second pump without operation of shut-off valves.

